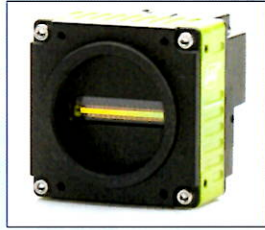


**JAI A/S**

Visit us at Booth #1F52 at Vision Stuttgart 2016

**New JAI high-speed monochrome line scan cameras in the Sweep Series**

JAI has released two new high-speed monochrome line scan cameras in the company's Sweep Series. The models are SW-4000M-PMCL (4K CMOS) and SW-8000M-PMCL (8K CMOS). Available with F-mount and M42x1 mount.



**Sweep SW-4000M-PMCL**

- Monochrome line scan
- 4K resolution CMOS - 4096 pixels
- Up to 200,000 lines per second (200 kHz)
- 7.5 µm X 7.5 µm pixels size

**Sweep SW-8000M-PMCL**

- Monochrome line scan
- 8K resolution CMOS - 8192 pixels
- Up to 100,000 lines per second (100 kHz)
- 3.75 µm X 5.78 µm pixel size

**Contact Details**

JAI A/S  
Valby Torvegade 17, 1st floor  
2500 Valby, Denmark  
www.jai.com  
camerasales.emea@jai.com  
Tel: +45 4457 8888  
Fax: +45 4491 3252

**First Light Imaging**

Visit us at Booth #1A72.4 at Vision Stuttgart 2016

**Ultra-Compact High Performance InGaAs camera**

Revolution is coming:

The latest ultra-compact high performance InGaAs camera from First Light Imaging is changing SWIR imaging:

- up to 400 images per second full frame
- under 10 electron read out noise
- 15 µm pixels detector for high resolution
- from 0.8 to 1.7 µm wavelength
- 14 bits for an extreme precision



Air or liquid cooled (*no LM*), C-RED 2 can operate in any environment, with the fastest acquisition rate of InGaAs SWIR cameras.

Visit us at VISION in Hall/Stand 1A72.4

More information:  
www.first-light.fr/c-red-2/

**Contact Details**

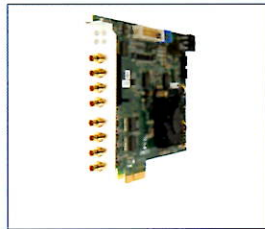
First Light Imaging  
100 route des Houilleres  
13590 Meyreuil, FRANCE  
www.first-light.fr  
contact@first-light.fr  
Tel: +33 (0) 4 42 61 29 20

**EURESYS**

Visit us at Booth #1D35 at Vision Stuttgart 2016

**Euresys launches a new PCIe 3.0 four-connection CoaXPRESS frame grabber with Data Forwarding**

The Coaxlink Quad G3 DF is a CoaXPRESS frame grabber with four CXP-6 inputs and four CXP-6 Data Forwarding outputs. It allows sharing the data (images) coming from the camera between two or more host computers. The Coaxlink Quad G3 DF is able to distribute the image processing load among several PCs, a feature which makes it ideal for demanding applications requiring heavy image processing and analysis.



MORE: <http://www.euresys.com/product/coaxlink-quad-g3-df/?tabproduct=benefits>

**Contact Details**

EURESYS  
www.euresys.com  
sales@euresys.com

**Flir**

Visit us at Booth # H 72 at Vision Stuttgart 2016

**High Definition Thermal Inspection Camera**

From its extraordinarily sensitive 1024 x 768 HD detector to its portable, flexible design – the FLIR Systems T1030sc is for anyone who needs high thermal sensitivity, fast raw data streaming, and customizable features in a battery-powered, handheld, uncooled LWIR camera.



The T1030sc offers a thermal sensitivity of more than twice the industry standard, and operates over a wide temperature range with calibrations up to 2000°C.

Further information:  
www.flir.eu/T1030sc

**Contact Details**

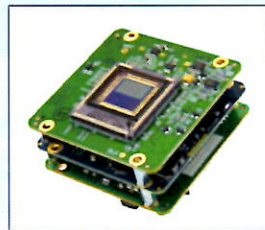
Flir  
www.flir.eu

**Critical Link**

Visit us at Booth #1J12 at Vision Stuttgart 2016

**Custom Imaging Designs**

Critical Link has over 3,000 building block combinations to jump start your next imaging system design. We have experience with sensors from Sony, Hamamatsu, Fairchild Imaging, CMOSIS, ON Semi/Aptina, e2v, and Sensors Unlimited, plus many others.



Designs leverage our SoC and FPGA development expertise, with multiple interface options.

Visit us at VISION in Hall 1, Stand J12.

View options:  
www.criticallink.com/imaging

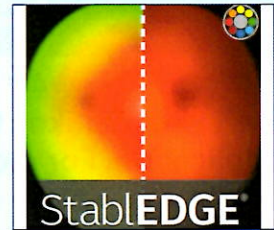
**Contact Details**

Critical Link, LLC  
6712 Brooklawn Parkway  
Syracuse, NY 13211  
www.criticallink.com  
info@criticallink.com  
Tel: +1 315 425 4045 x223

**Midwest Optical Systems - MidOpt**

**MidOpt StabLEDGE® hybrid filter**

MidOpt StabLEDGE® hybrid filter designs combine absorptive filter glass and interference filter coatings to provide superior out-of-band blocking and >90% peak transmission.



Reduce the effects of short shifting while maintaining a stable passband; essential when using short focal length (<12mm) lenses.

StabLEDGE® Filters are available in-stock and ready to ship. Click here to find out more:  
<http://midopt.com/stabledge/>

**Contact Details**

Midwest Optical Systems, Inc. (MidOpt)  
322 Woodwork Lane  
Palatine, IL 60067  
www.midopt.com  
info@midopt.com  
Tel: +1 847 359 3550  
Fax: +1 847 359 3567